

```
usr010ubuntu@WS010ubuntu:~$ sudo apt-get update
[sudo] password for usr010ubuntu:
Err:1 http://security.ubuntu.com/ubuntu disco-security InRelease
      Could not resolve 'security.ubuntu.com'
Err:2 http://ua.archive.ubuntu.com/ubuntu disco InRelease
      Could not resolve 'ua.archive.ubuntu.com'
Err:3 http://ua.archive.ubuntu.com/ubuntu disco-updates InRelease
      Could not resolve 'ua.archive.ubuntu.com'
Err:4 http://ua.archive.ubuntu.com/ubuntu disco-backports InRelease
      Could not resolve 'ua.archive.ubuntu.com'
```

Network

Adapter 1 Adapter 2 Adapter 3 Adapter 4

Enable Network Adapter

Attached to: Internal Network

Name: intnet

▶ Advanced

OK Cancel

Activities May 18 13:08

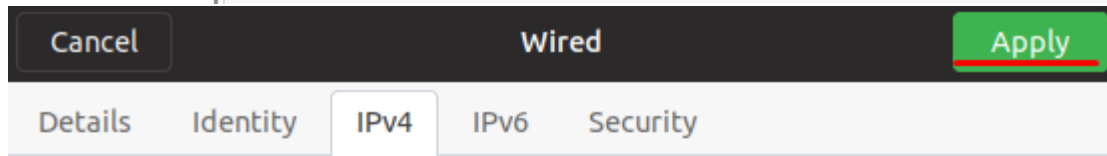
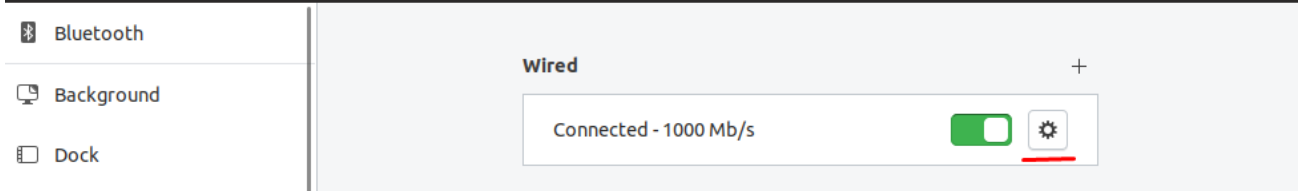
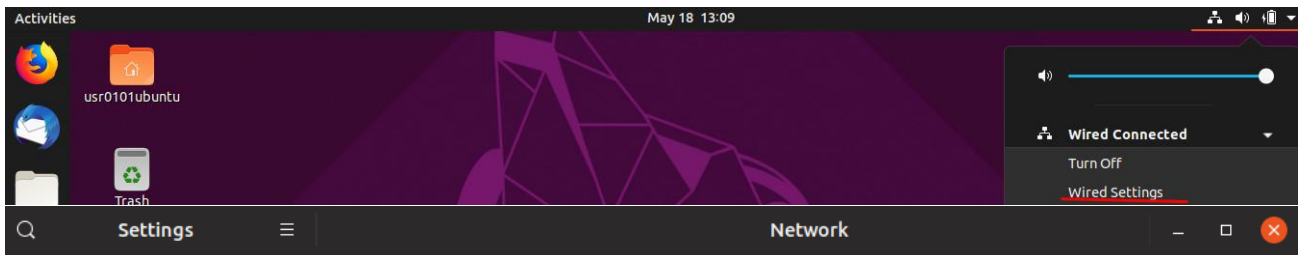
usr0101ubuntu

Trash

Wired Connected

Estimating...

usr0101ubuntu



IPv4 Method

Automatic (DHCP) Link-Local Only

Manual Disable

Addresses

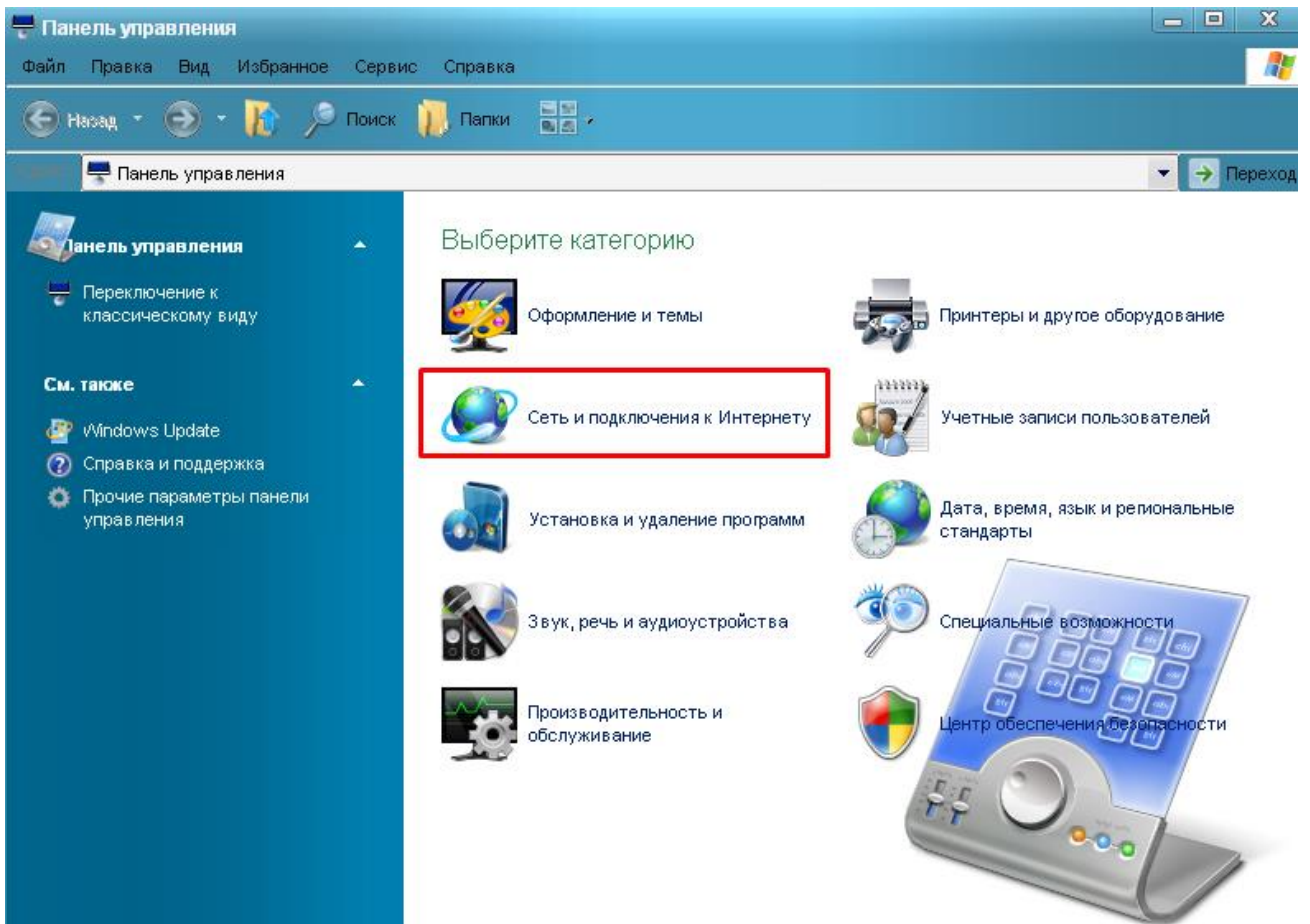
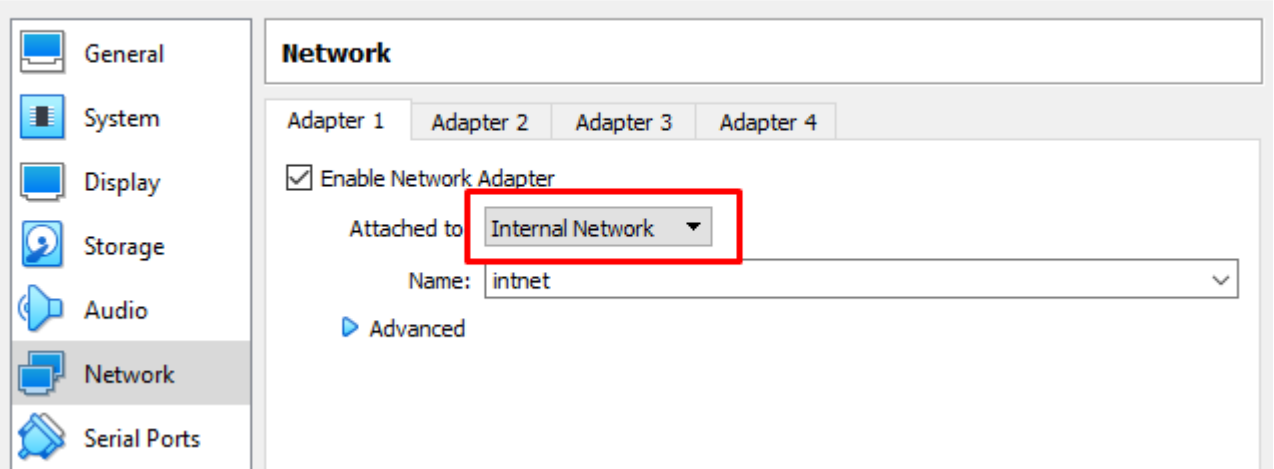
Address	Netmask	Gateway	
192.168.1.4	24		

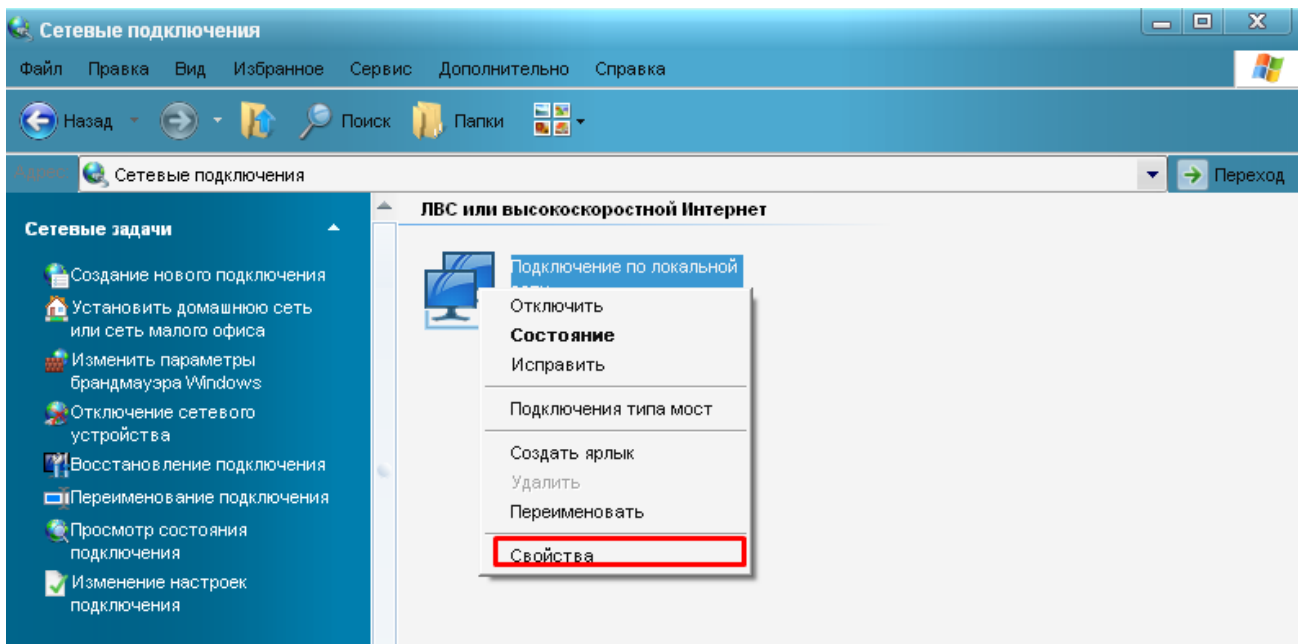
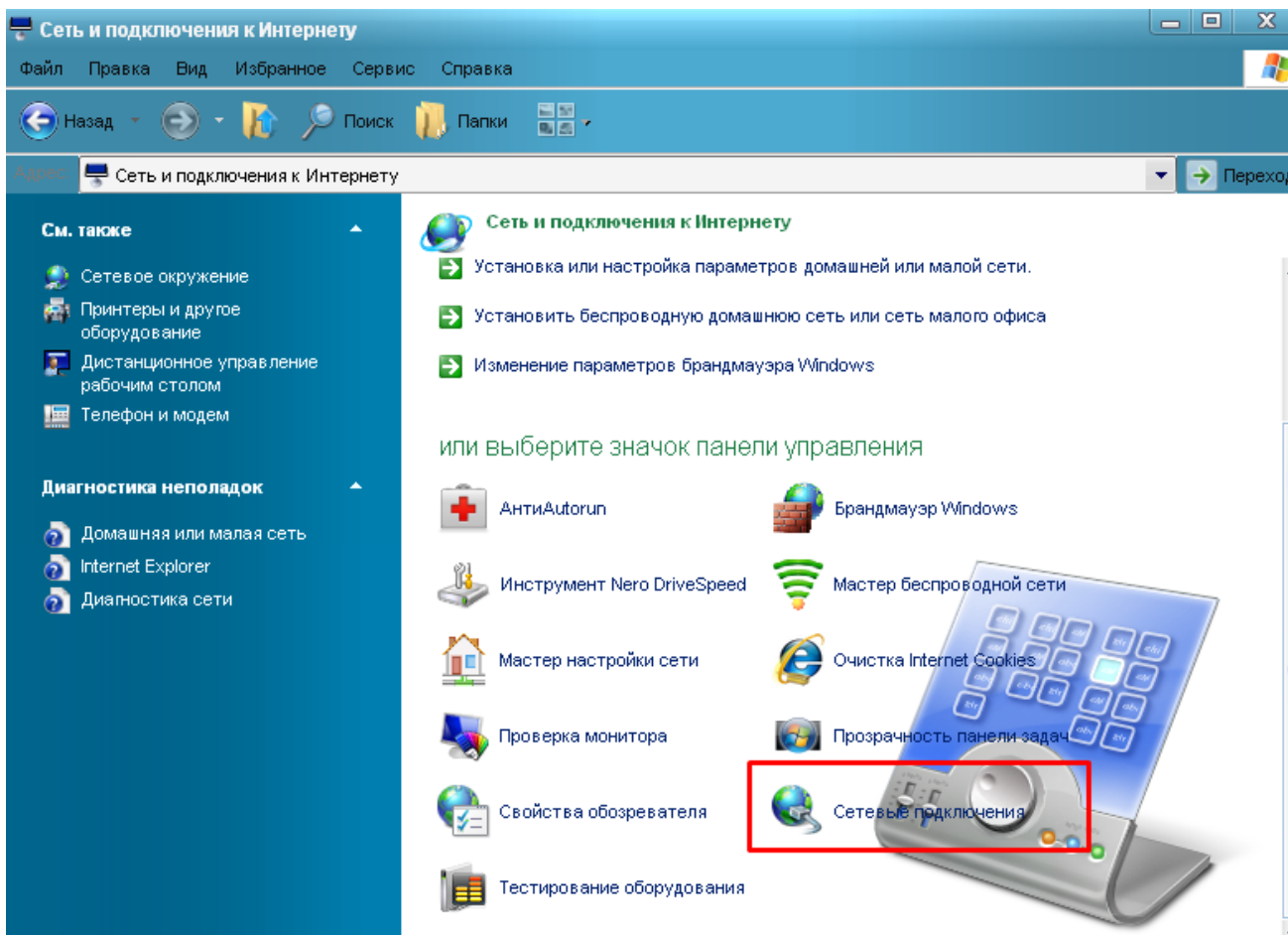
DNS Automatic

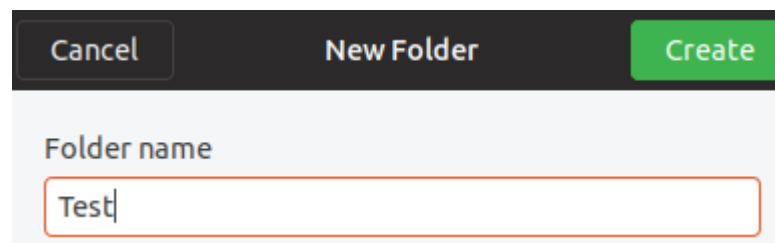
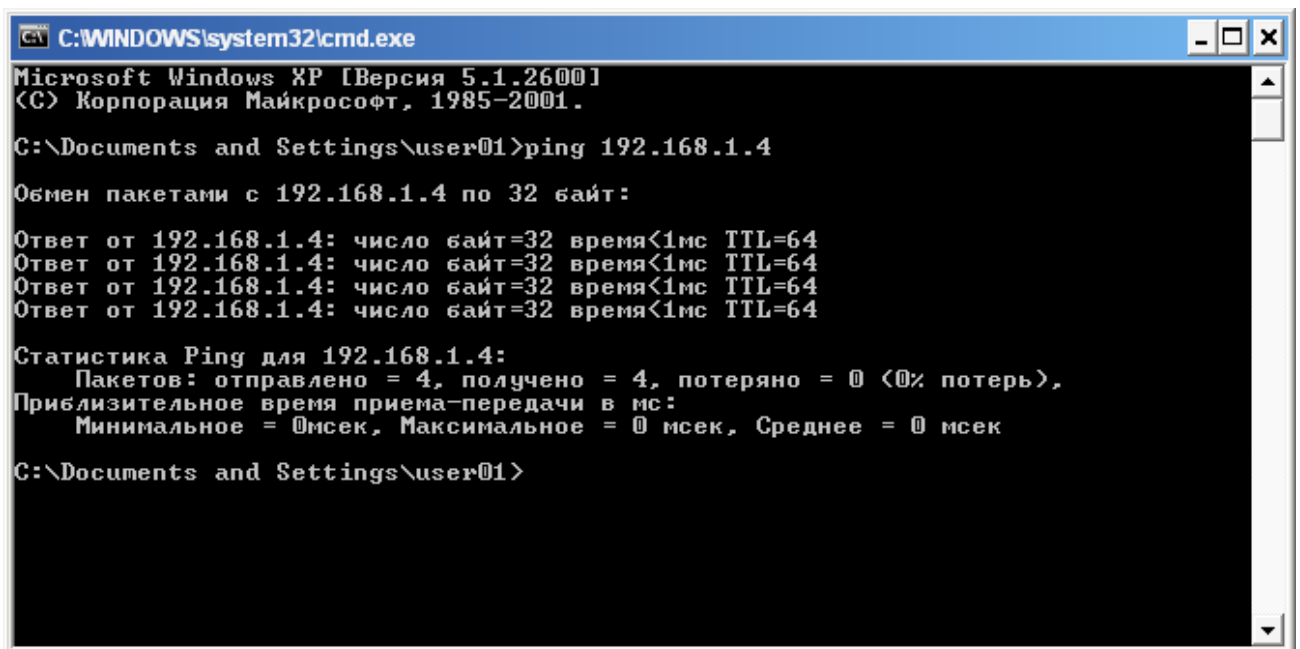
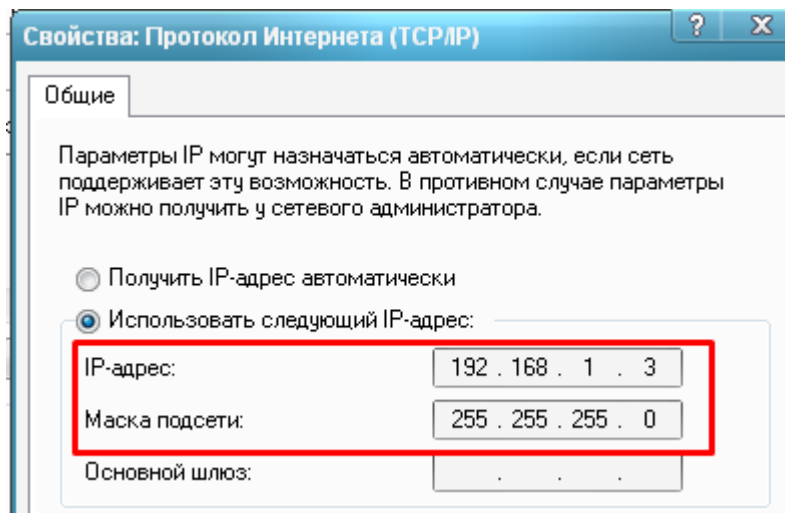
Separate IP addresses with commas

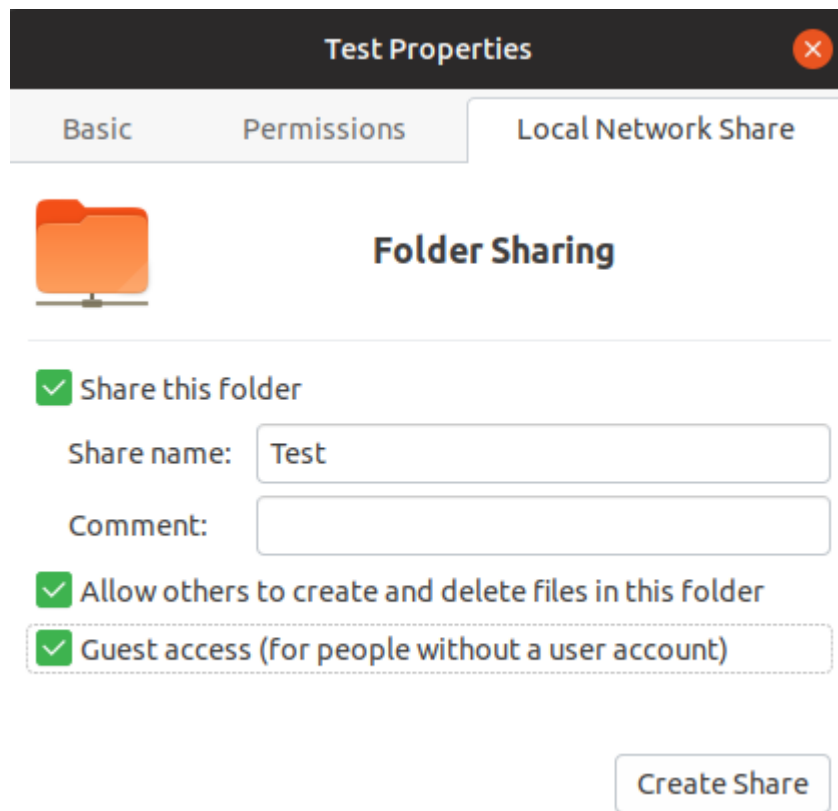
Routes Automatic

Address	Netmask	Gateway	Metric









```
usr0101ubuntu@WS0101ubuntu: ~  
usr0101ubuntu@WS0101ubuntu:~$ sudo vi /etc/samba/smb.conf
```

```
usr0101ubuntu@WS0101ubuntu: ~  
# Change this to the workgroup/NT-domain name your Samba server will part of  
workgroup = WORKGROUP  
  
# server string is the equivalent of the NT Description field  
server string = %h server (Samba, Ubuntu)  
  
#### Networking ####  
  
# The specific set of interfaces / networks to bind to  
# This can be either the interface name or an IP address/netmask;  
# interface names are normally preferred  
interfaces = 127.0.0.0/8 192.168.1.0/24 eth0
```

```
usr0101ubuntu@WS0101ubuntu: ~
# Change this to the workgroup/NT-domain name your Samba server will part of
workgroup = WORKGROUP

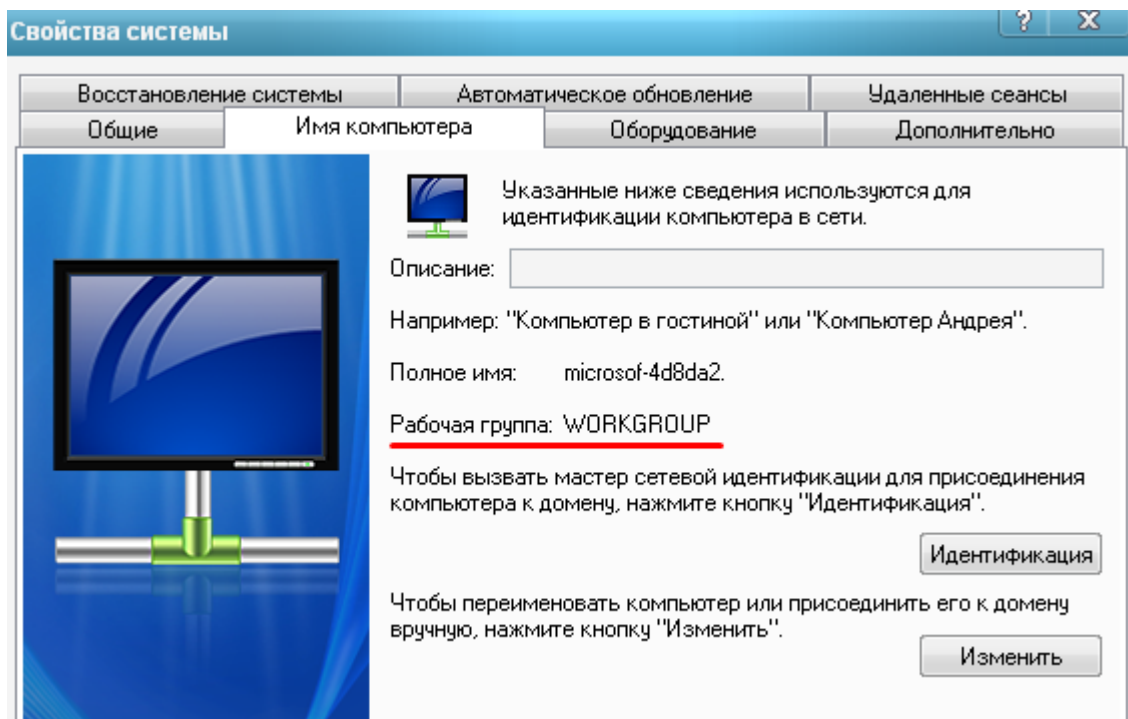
# server string is the equivalent of the NT Description field
server string = %h server (Samba, Ubuntu)

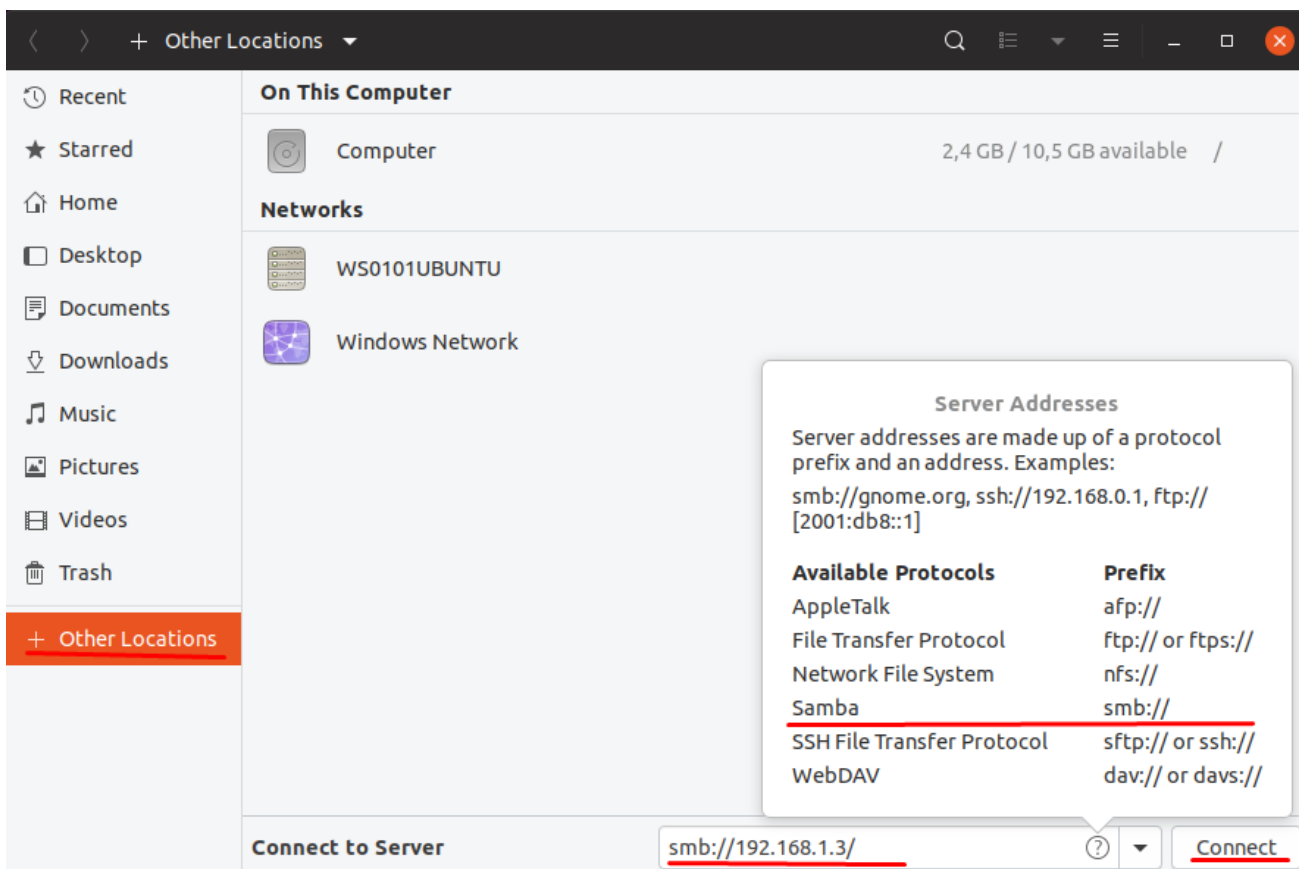
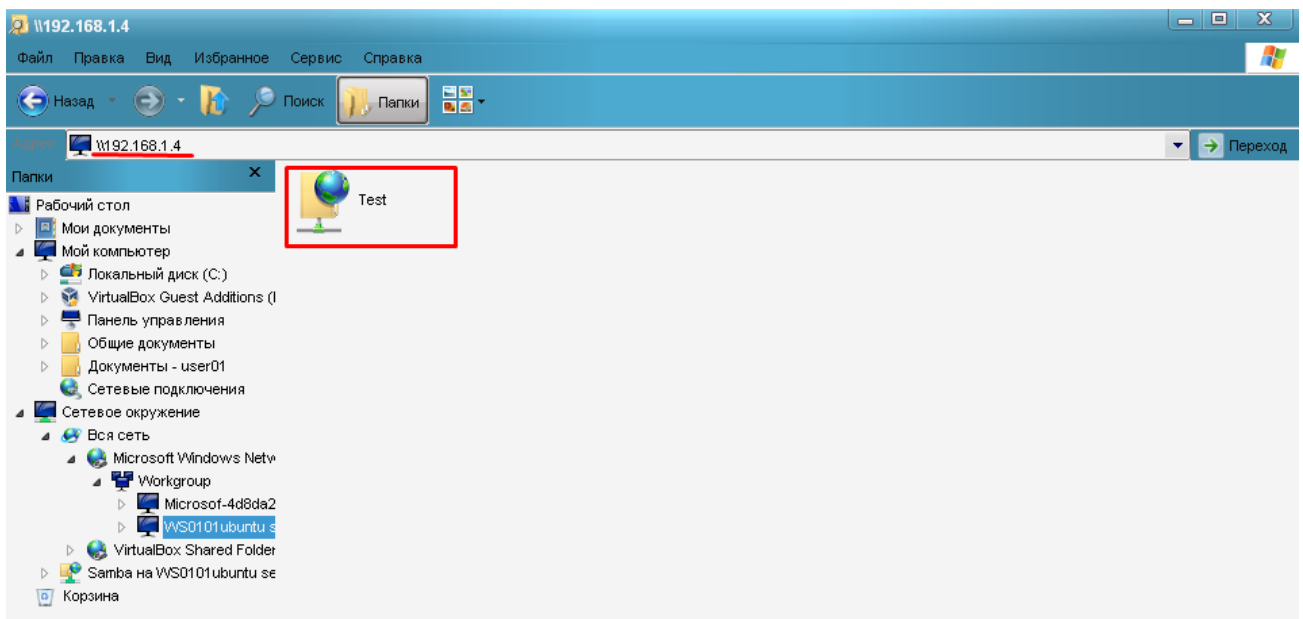
#### Networking ####

# The specific set of interfaces / networks to bind to
# This can be either the interface name or an IP address/netmask;
# interface names are normally preferred
interfaces = 127.0.0.0/8 192.168.1 eth0


# Only bind to the named interfaces and/or networks; you must use the
# 'interfaces' option above to use this.
# It is recommended that you enable this feature if your Samba machine is
# not protected by a firewall or is a firewall itself. However, this
# option cannot handle dynamic or non-broadcast interfaces correctly.
; bind interfaces only = yes

#### Debugging/Accounting ####
:wq
```





Cancel Connect

 **Password required for 192.168.1.3**

Username

Domain

Password

Forget password immediately
 Remember password until you logout
 Remember forever

Windows s... 192.168.1.3

- Recent
- ★ Starred
- Home
- Desktop
- Documents
- Downloads
- Music
- Pictures
- Videos
- Trash
- + Other Locations

ADMIN\$ C\$ Shared Folder