

TRAVELING GREEN: SUSTAINABLE HOTELS



1. Lead-in

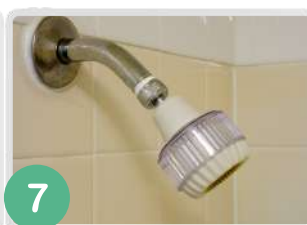
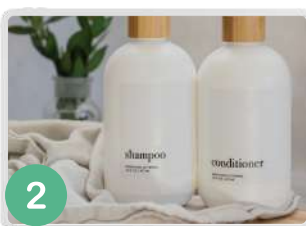
Discuss the questions below.

1. Do you think tourism has a negative impact on the environment? Why or why not?
2. Have you ever visited a destination that was overcrowded or damaged by tourism? How did it affect your experience?
3. What kinds of activities or experiences do you think make a vacation "eco-friendly"?
4. Why do you think some hotels are making an effort to be more sustainable? What might be their challenges?

2. Vocabulary

Match the words from the box to the correct photo.

toiletries / low-flow showerhead / food waste / rooftop insulation / solar panels / fertilizer / motion sensor



3. Speaking

Hotels - sustainable and unsustainable practices.
Put the practices into the correct categories.

- | | |
|-----------------------------------------------------------------------------------------------------------------------------------------------------------------------------------------------------------------------------------------------------------------------------------------------------------------------------------------------|--------------------------------------------------------------------------------------------------------------------------------------------------------------------------------------------------------------------------------------------------------------------------------------------------------------------------------------------------------------------------------------------------------------------|
| <ol style="list-style-type: none"> 1. Implement recycling programs 2. Use LED bulbs 3. Serve buffet-style meals 4. Install solar panels 5. Compost food waste 6. Create a rooftop garden 7. Neglect proper insulation 8. Run lights and appliances continuously | <ol style="list-style-type: none"> 9. Source food locally 10. Offer plastic straws and cutlery 11. Install motion-sensor lights and taps 12. Overdevelop sensitive natural areas (e.g. beaches or forests) 13. Offer disposable toiletries 14. Use low-flow showerheads 15. Harvest rainwater 16. Rely on excessive air conditioning |
|-----------------------------------------------------------------------------------------------------------------------------------------------------------------------------------------------------------------------------------------------------------------------------------------------------------------------------------------------|--------------------------------------------------------------------------------------------------------------------------------------------------------------------------------------------------------------------------------------------------------------------------------------------------------------------------------------------------------------------------------------------------------------------|

Sustainable practices	Unsustainable practices

Now discuss the impact (positive or negative) of each practice.

Examples:

If you use low-flow showerheads, you conserve water by reducing the flow rate without sacrificing performance.

If you neglect proper insulation, you allow heat or cold to escape, increasing energy use for temperature control.

4. Speaking

Rank the following from most to least sustainable. Explain your reasons (consider energy use, waste production, and overall environmental impact).



luxury hotel



glamping site



all-inclusive resort



cruise



hostel



cabin

5. Listening A

You are going to watch a video called "[Sustainability at Grand Hyatt Singapore](#)". The first time you watch the video, decide if the statements are true or false.

Video:



- | | |
|------------------------------------------------------------------------------------------------------|---------------------|
| 1. Leftover soap bars at Grand Hyatt Singapore are thrown away to maintain hygiene standards. | True / False |
| 2. The hotel's laundry system uses reverse osmosis water treatment to reuse water for other washing. | True / False |
| 3. The hotel's rooftop garden supplies 70% of the herbs used in its kitchen. | True / False |
| 4. Excess buffet food is distributed to needy families across Singapore. | True / False |
| 5. The waste management system converts food waste into organic fertilizer within 48 hours. | True / False |
| 6. Grand Hyatt Singapore has eliminated most administrative paper. | True / False |
| 7. Single-use plastic items like straws and takeaway packaging are still widely used at the hotel. | True / False |
| 8. Nearly 80% of the hotel's wine purchases come from sustainable, organic-certified vineyards. | True / False |

Listening B

Watch the video again and complete the extracts with the words you hear.

Grand Hyatt Singapore has implemented sustainable practices on multiple levels of their service:

1. Leftover _____ are recycled into new bars and distributed globally to families in high-risk areas for hygiene-related illnesses.
2. Laundry goes through a reverse osmosis water treatment process, removing _____ and bleaching agents to allow treated water to be reused for other washing.
3. To reduce its carbon footprint, the hotel imports 70% of its _____ from an organic cooperative farm in Cameron Highlands, Malaysia.
4. The hotel also sources 30% of its herbs from its own garden, maintained using fertilizers produced from its in-house waste management plant.
5. Working with nonprofit organizations, excess _____ food is distributed to needy families across Singapore.
6. To keep 100% of its food waste out of the city's landfills, the hotel uses its in-house food waste management system to convert it into pathogen-free organic _____ within 24 hours.
7. Most administrative paper used during the check-in and check-out process has been reduced as the hotel has migrated guest folios to _____ display platforms.
8. Grand Hyatt Singapore is home to Singapore's first _____ Italian buffet at Pete's Place.
9. All coffee served throughout the hotel is Rainforest Alliance certified, and most single-use plastic items, like straws and takeaway packaging, have been replaced with _____ options.
10. The hotel sources high-animal-welfare products, including _____ that is certified to be sustainably sourced.
11. Additionally, almost 80% of all wine purchases are sourced from _____, organic-certified vineyards.

6. Speaking

Post-listening discussion.

1. Which of the sustainable practices implemented by Grand Hyatt Singapore do you think has the biggest environmental impact? Why?
2. Are there any practices shown in the video you didn't like?
3. Do you think the practices at Grand Hyatt Singapore can be replicated by smaller hotels? Why or why not?
4. Do you think sustainability will eventually become a standard expectation for all hotels, or will it remain an optional, luxury feature?

7. Speaking

Work in pairs or small groups.
You will act as sustainability consultants.
Your job is to analyze one of the hotels below and to recommend suitable sustainability features to address the unique challenges it faces, according to its location. Explain how these features would benefit the environment, the hotel, and the guests.
Also discuss sustainability features that are not suitable or unnecessary for your chosen hotel.



1. Desert Oasis Resort
 - Location: A luxury hotel located in a remote desert region, surrounded by sand dunes and minimal vegetation.
 - Environmental challenges: Extreme heat and scarce water resources.



2. Coastal Paradise Hotel
 - Location: A beachfront resort in a tropical region, near coral reefs and a popular diving destination.
 - Environmental challenges: Marine pollution and coastal erosion.



3. Alpine Lodge Retreat
 - Location: A hotel nestled in a mountainous, forested area with cold winters and heavy snowfall.
 - Environmental challenges: High heating requirements, potential wildlife disruption, and waste disposal issues.



4. Rainforest Eco-Lodge
 - Location: A small resort in the heart of a tropical rainforest.
 - Environmental challenges: High rainfall, soil erosion, and preserving biodiversity.



5. Urban Luxury Hotel
 - Location: A high-rise hotel in the center of a bustling city with high energy demand and limited space.
 - Environmental challenges: Energy consumption, air pollution, and waste management.

8. Reflection and feedback

What would you like to take from this lesson?
Complete the table below. After that, your teacher will give you some feedback.

A) New vocabulary: write 5 (or more!) words or expressions from this lesson you would like to remember and use in the future.	B) Pronunciation: write the words from this lesson that you find difficult to pronounce.	C) Error correction: write the mistakes your teacher corrected (e.g. expressions you translate from your language that are actually different in English; prepositions, etc.)

9. Homework

Research one of the topics below.
Report your findings to your teacher in the next class.

1. Tips for choosing sustainable accommodation
2. Top sustainable practices for hotels
3. Can tourism ever be sustainable

10. Keep learning!

Keep learning outside of the classroom!
To reinforce and enrich the vocabulary from this class, check the "Additional resources" section (videos and articles) here:



[LINK TO ADDITIONAL RESOURCES](#)