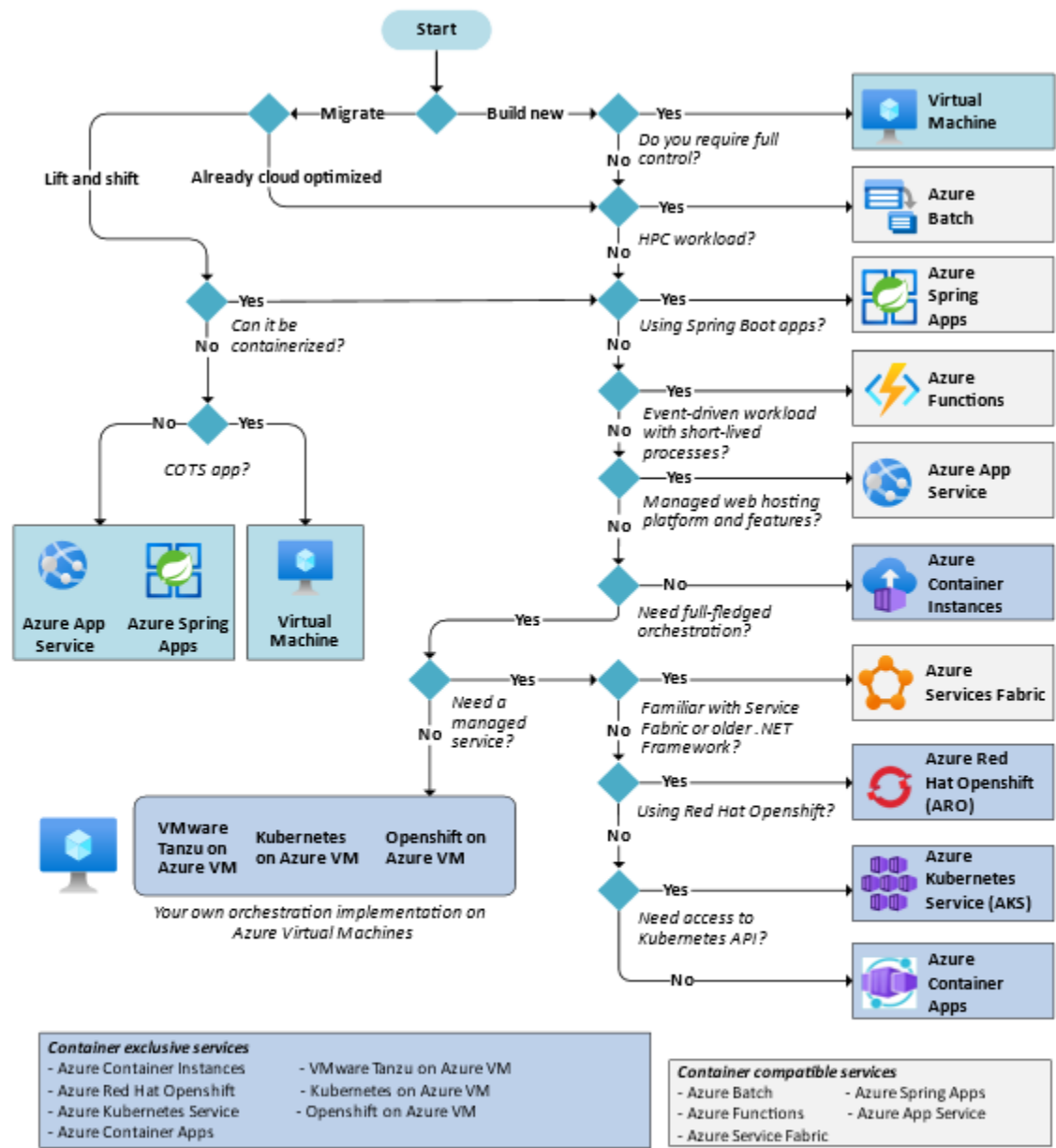
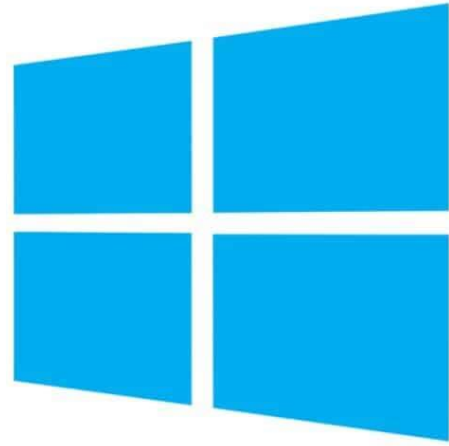


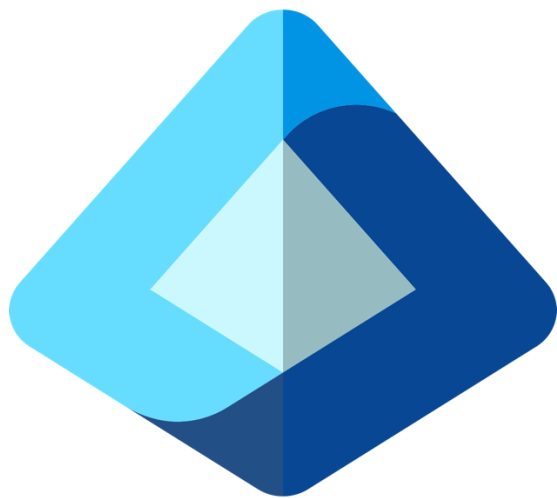
Розподілені системи та хмарні технології

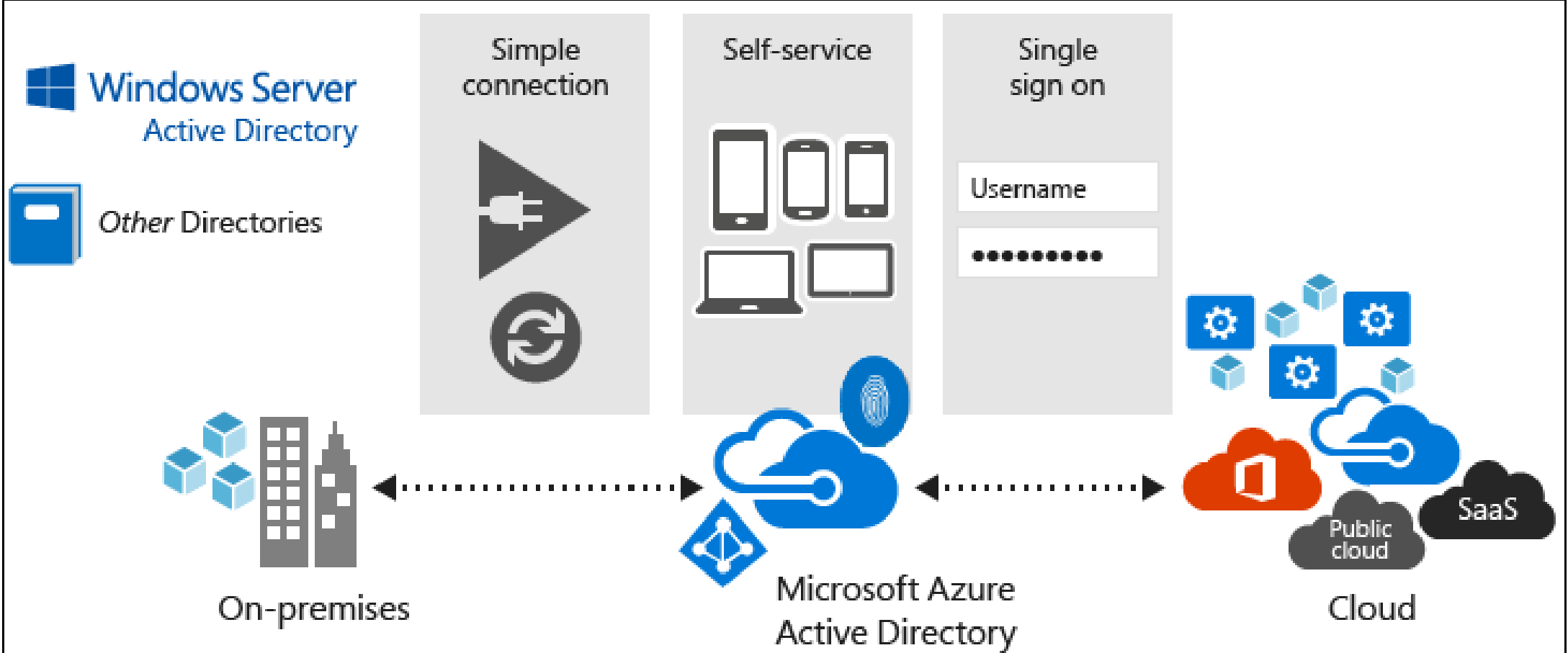
Entra ID





Active Directory








NovaHaven Technologies ...


+ Add ▾  Manage tenants  What's new |  Preview features |  Got feedback? ▾

 To improve your experience, we're experimenting with your Home page. Click "Got feedback?" to tell us what you think.

Overview Monitoring Properties Recommendations Setup guides

 Search your tenant

Basic information

Name	NovaHaven Technologies	Users	1
Tenant ID	6e9f12c7-044b-440b-8a17-aa8ffcb56b62 	Groups	1
Primary domain	novahaventech.onmicrosoft.com	Applications	0
License	Microsoft Entra ID Free	Devices	0

Державний університет «Житомирська політехніка» ...

[+ Add](#) [Manage tenants](#) [What's new](#) [Preview features](#) [Got feedback?](#)

To improve your experience, we're experimenting with your Home page. Click "Got feedback?" to tell us what you think.

[Overview](#) [Monitoring](#) [Properties](#) [Recommendations](#) [Setup guides](#)

Search your tenant

Basic information

Name Державний університет «Житомирська політехніка»

Tenant ID d84995f6-c5b5-422d-b123-c1243b2f5125


Primary domain ztu.edu.ua

License Microsoft Entra ID Basic for EDU

Alerts

Державний університет «Житомирська політехніка» ...

+ Add ▾  Manage tenants  What's new |  Preview features |  Got feedback? ▾

 To improve your experience, we're experimenting with your Home page. Click "Got feedback?" to tell us what you think.

Overview Monitoring Properties Recommendations Setup guides

 Search your tenant

Basic information

Name Державний університет «Житомирська політехніка»

Tenant ID d84995f6-c5b5-422d-b123-c1243b2f5125 

Primary domain ztu.edu.ua

License Microsoft Entra ID Basic for EDU

Alerts

Державний університет «Житомирська політехніка» | Custom domain names ...

[+](#) Add custom domain [🔧](#) Diagnose and solve problems [🔄](#) Refresh [📄](#) Columns | [🗨️](#) Got feedback?

[ℹ️](#) Looking to move an on-premises application to the cloud and use Microsoft Entra Domain Services?

[🔍](#) Search

[🔍](#) Add filter

Name	Status	Federated	Primary
student.ztu.edu.ua	✔️ Verified		
ztu.edu.ua	✔️ Verified		✔️
ztuedua0.onmicrosoft.com	✔️ Available		



Active Directory



Group Policy Management Editor

File Action View Help

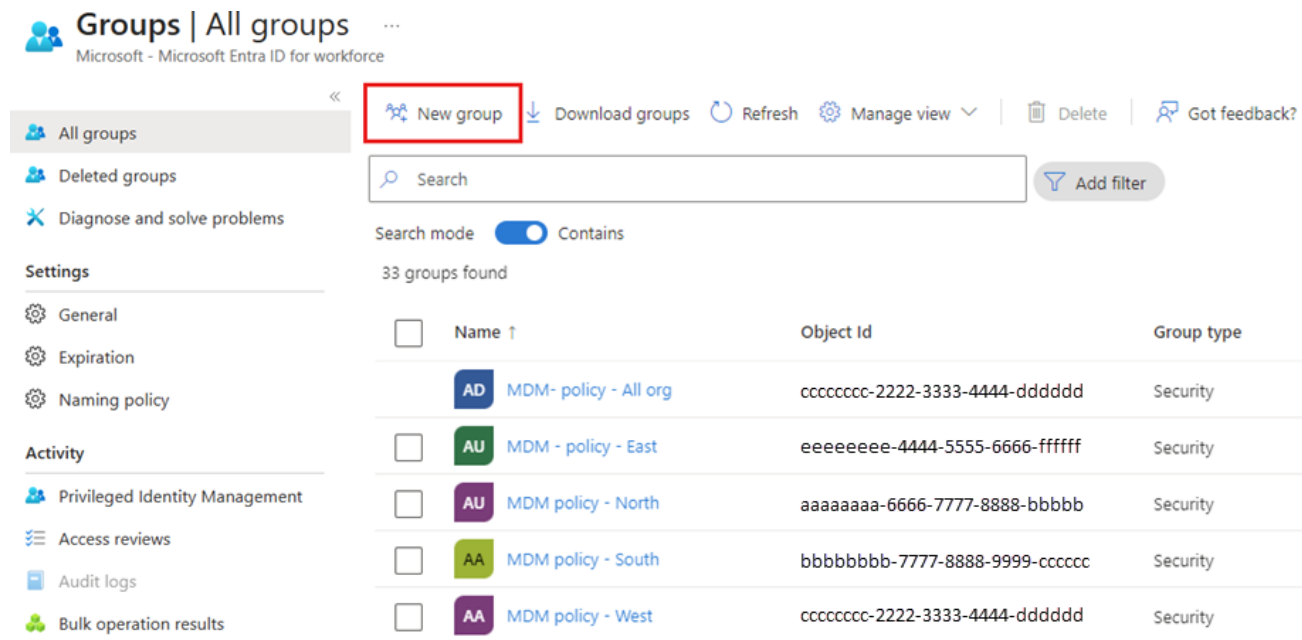
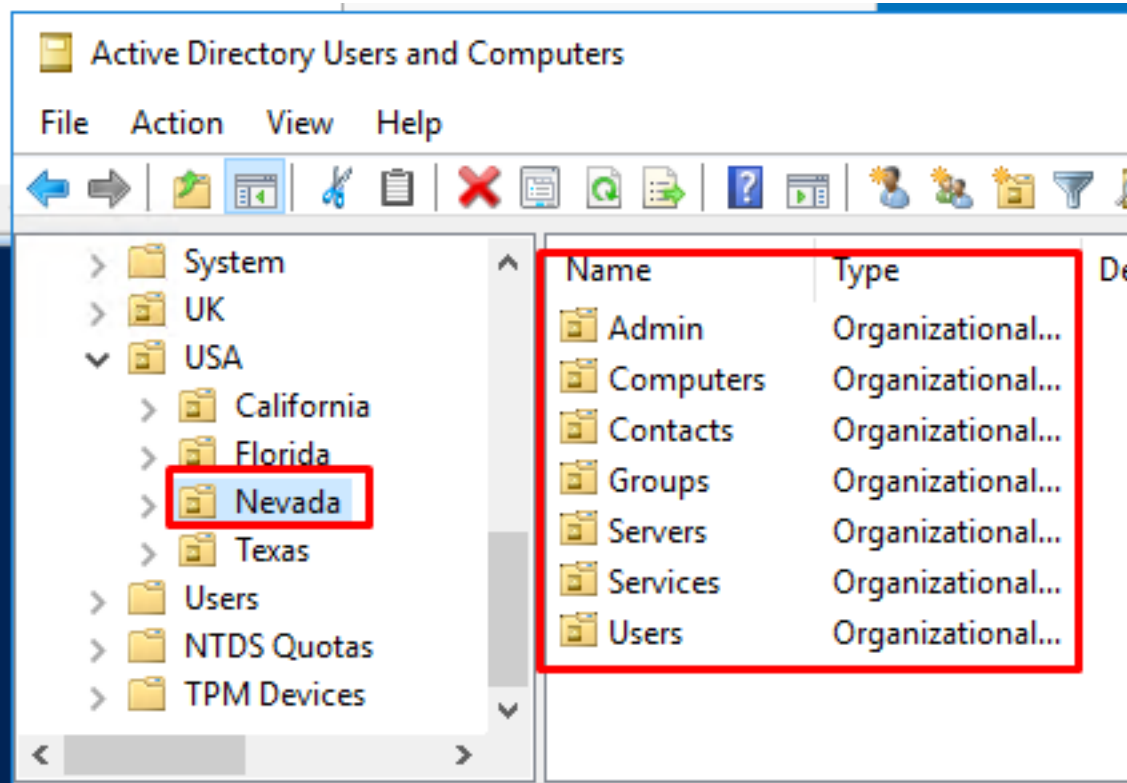
← → ↻ ✕ 📄 ? 📅

AADDC Computers GPO [E48L1AGUF5NDC]

- Computer Configuration
 - Policies
 - Software Settings
 - Software installation
 - Windows Settings
 - Name Resolution Policy
 - Scripts (Startup/Shutdown)
 - Security Settings
 - Policy-based QoS
 - Administrative Templates: Policy
 - Preferences
 - User Configuration
 - Policies
 - Preferences

Name	Description
Account Policies	Password and account lockout policies
Local Policies	Auditing, user rights and security options polici...
Event Log	Event Log
Restricted Groups	Restricted Groups
System Services	System service settings
Registry	Registry security settings
File System	File system security settings
Wired Network (IEEE 802.3) Policies	Wired Network Policy Administration. Manage ...
Windows Firewall with Advanced Security	Windows Firewall with Advanced Security
Network List Manager Policies	Network name, icon and location group policies.
Wireless Network (IEEE 802.11) Policies	Wireless Network Policy Administration. Mana...
Public Key Policies	
Software Restriction Policies	
Network Access Protection	Network Access Protection
Application Control Policies	Application Control Policies
IP Security Policies on Active Directory (C...	Internet Protocol Security (IPsec) Administratio...
Advanced Audit Policy Configuration	Advanced Audit Policy Configuration

< ||| >



Active Directory Users and Computers

WEB-SERVER-01 Properties

Attributes:

Attribute	Value
sAMAccountName	WEB-SERVER-01\$
sAMAccountType	805306369 = (MACHINE_ACCOUNT)
scriptPath	<not set>
secretary	<not set>
securityIdentifier	<not set>
seeAlso	<not set>
serialNumber	<not set>
servicePrincipalName	WSMAN/WEB-SERVER-01; WSMAN/WEB-SERVER-01
shadowExpire	<not set>
shadowFlag	<not set>
shadowInactive	<not set>
shadowLastChange	<not set>
shadowMax	<not set>
shadowMin	<not set>

Multi-valued String Editor

Attribute: servicePrincipalName

Value to add:

Values:

- HOST/WEB-SERVER-01
- HOST/WEB-SERVER-01.adsec.local
- RestrictedKrbHost/WEB-SERVER-01
- RestrictedKrbHost/WEB-SERVER-01.adsec.local
- TERMSRV/WEB-SERVER-01
- TERMSRV/WEB-SERVER-01.adsec.local
- WSMAN/WEB-SERVER-01
- WSMAN/WEB-SERVER-01.adsec.local

Microsoft Entra admin center

Search resources, services, and docs (G+)

Home >

App registrations

+ New registration | Endpoints | Troubleshooting | Refresh | Download

Starting June 30th, 2020 we will no longer add any new features to Azure Active Directory Authentication Library (ADAL) and Azure Active Directory Graph. We will continue to provide technical support and security updates but we will no longer provide feature updates. Applications will need to be upgraded to Microsoft Authentication Library (MSAL) and Microsoft Graph. [Learn more](#)

All applications | **Owned applications** | Deleted applications

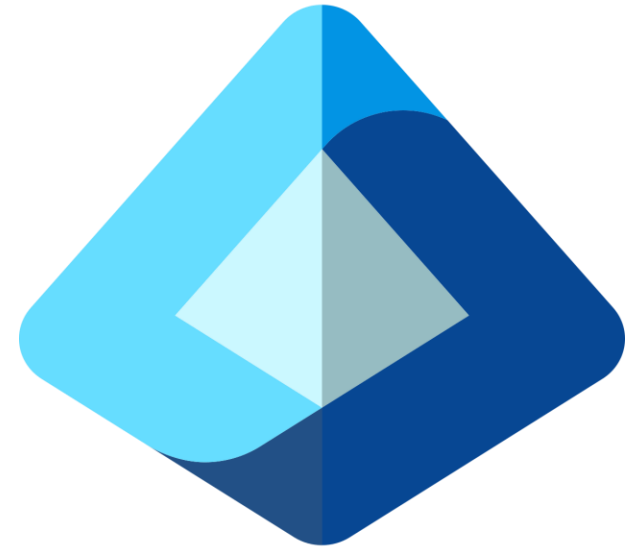
Start typing a display name or application (client) ID to filter these results | Add filters

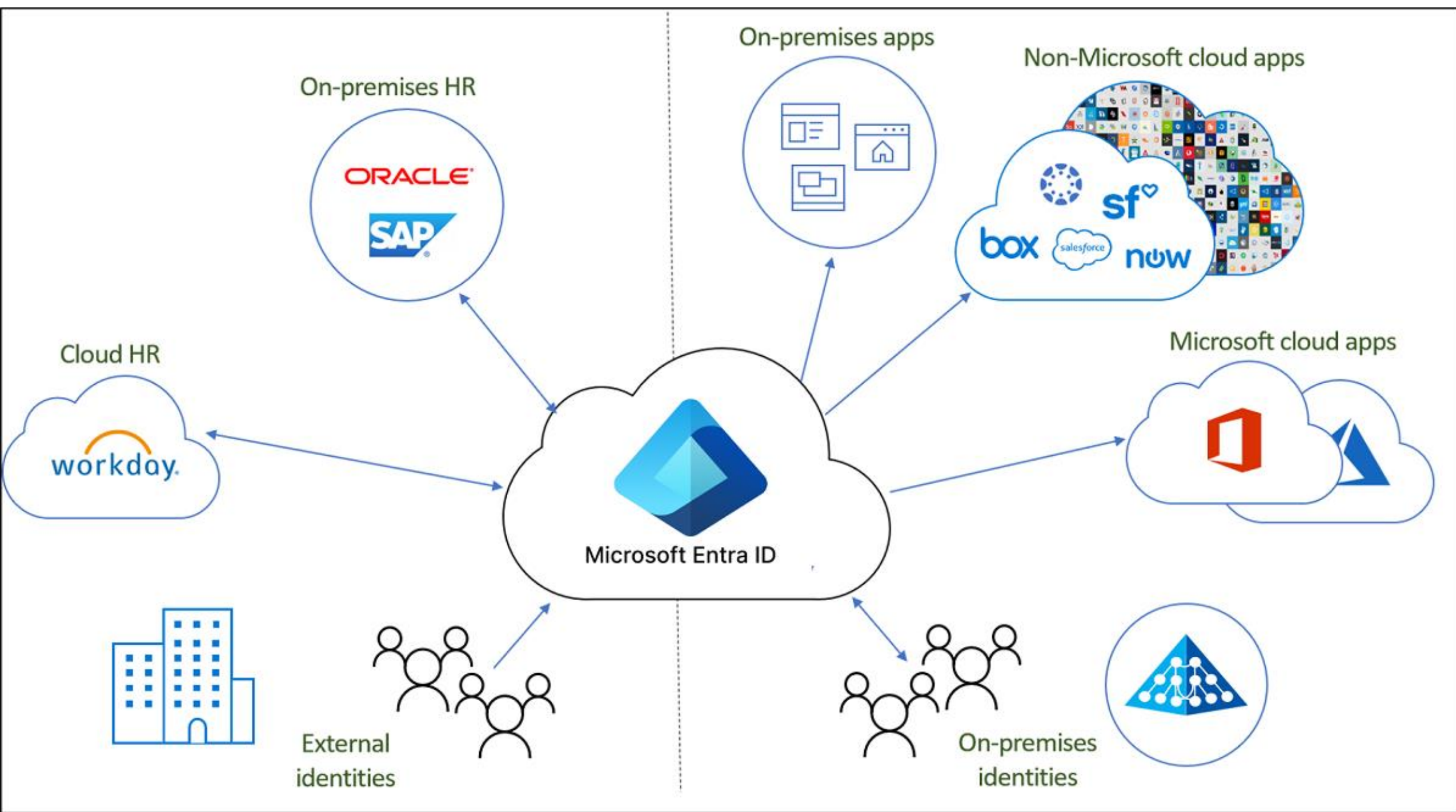
5 applications found

Display name	Application (client) ID	Created on	Certificates & secrets
ConsoleGetTokenApp	00001111-aaaa-2222-bbbb-33...	5/8/2023	-
freshtest	11112222-bbbb-3333-cccc-444...	6/29/2023	-
GetStartedWebApp	22223333-cccc-4444-dddd-555...	6/27/2023	Current



Active Directory





Microsoft Entra ID and Microsoft Entra Suite

Explore identity and network access features and pricing.

<p>Microsoft Entra ID P1</p> <p>\$6.00 user/month</p> <p>Microsoft Entra ID P1 (formerly Azure Active Directory P1) is available as a standalone or included with Microsoft 365 E3 for enterprise customers and Microsoft 365 Business Premium for small to medium businesses.</p> <p>Try for free</p> <p>Contact Sales ></p>	<p>Microsoft Entra ID P2</p> <p>\$9.00 user/month</p> <p>Microsoft Entra ID P2 (formerly Azure Active Directory P2) is available as a standalone or included with Microsoft 365 E5 for enterprise customers.</p> <p>Try for free</p> <p>Contact Sales ></p>	<p>Microsoft Entra Suite</p> <p>\$12.00 user/month</p> <p>The Microsoft Entra Suite combines network access, identity protection, governance, and identity verification solutions. A subscription to Microsoft Entra ID P1 or a package that includes Microsoft Entra ID P1 is required. Special pricing is available for Microsoft Entra ID P2 and Microsoft 365 E5 customers.</p> <p>Try for free</p> <p>Contact Sales ></p>
---	---	--

✔ Partially included ✔ Included

[Expand all](#) | [Collapse all](#)

> Microsoft Entra ID	✔	✔	
> Microsoft Entra ID Protection	✔	✔	✔
> Microsoft Entra ID Governance	✔	✔	✔
> Microsoft Entra Verified ID	✔	✔	✔
> Microsoft Entra Internet Access			✔
> Microsoft Entra Private Access			✔



User account

Description

Cloud identity

A user account with a cloud identity is defined only in Microsoft Entra ID. This type of user account includes administrator accounts and users who are managed as part of your organization. A cloud identity can be for user accounts defined in your Microsoft Entra organization, and also for user accounts defined in an external Microsoft Entra instance. When a cloud identity is removed from the primary directory, the user account is deleted.

Directory-synchronized identity

User accounts that have a directory-synchronized identity are defined in an on-premises Active Directory. A synchronization activity occurs via Microsoft Entra Connect to bring these user accounts in to Azure. The source for these accounts is Windows Server Active Directory.

Guest user


Guest user accounts are defined outside Azure. Examples include user accounts from other cloud providers, and Microsoft accounts like an Xbox LIVE account. The source for guest user accounts is Invited user. Guest user accounts are useful when external vendors or contractors need access to your Azure resources.



[Home](#) > [Users](#) >

New user ...

Default Directory

 Bulk invite and create are now located under the 'Bulk operations' menu item on the 'All users' view. [View all users](#)

Select template

- Create user**
Create a new user in your organization.
- Invite user**
Invite a new guest user to collaborate with your organization. The user will be emailed an invitation they can accept in order to begin collaborating.

[Help me decide](#)



Home >



Users ...



+ New user ▾



Download users



Bulk operations ▾



All users (preview)



Audit logs



Sign-in logs



Diagnose and solve problems

Manage



Deleted users (preview)



Password reset



User settings



Bulk operation results

Bulk create users



1. Download csv template (optional)

[Download](#)

2. Edit your csv file

3. Upload your csv file



[Learn more about bulk import users](#)



```
1 # Create a password profile value
2 $PasswordProfile = @{ Password = "<Password>" }
3
4 # Create the new user
5 New-MgUser -DisplayName "Abby Brown" -PasswordProfile $PasswordProfile -MailNickName "AbbyB" -UserPrincipalName "AbbyB@contoso.com" -AccountEnabled
```



```
1 az ad user create --display-name "Abby Brown" \  
2 --password "<password>" \  
3 --user-principal-name "AbbyB@contoso.com" \  
4 --force-change-password-next-login true \  
5 --mail-nickname "AbbyB"
```



Home >



Groups | All groups

Default Directory



New group Download groups Refresh Manage view Delete Got feedback?



All groups



Deleted groups



Diagnose and solve problems

Settings



General



Expiration



Naming policy

Activity



Name ↑

Group type

Membership type

Source



IC IT cloud admins test

Security

Dynamic

Cloud



JA Junior Admins

Security

Assigned

Cloud



MA Managers

Security

Assigned

Cloud



SD Service Desk

Security

Assigned

Cloud



TE Test

Security

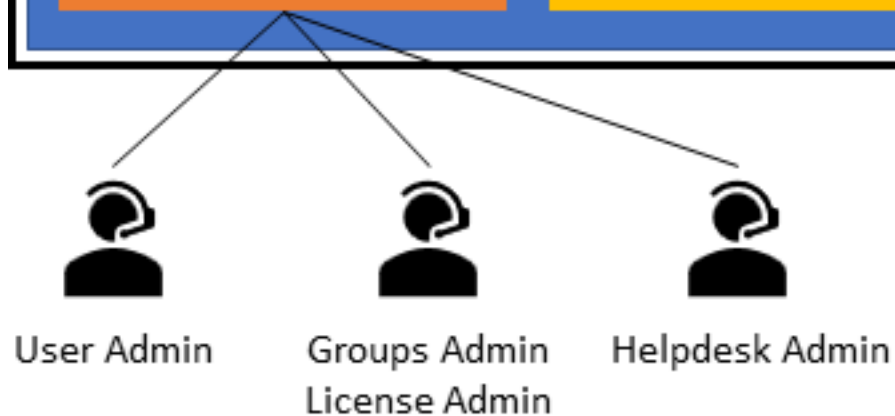
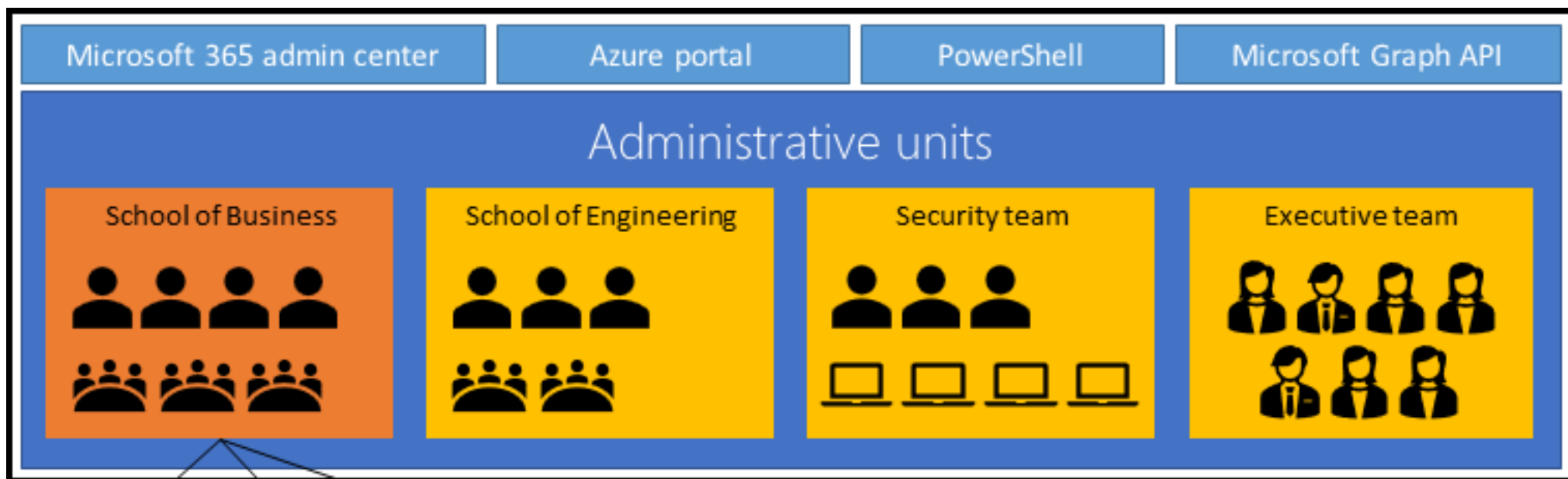
Assigned

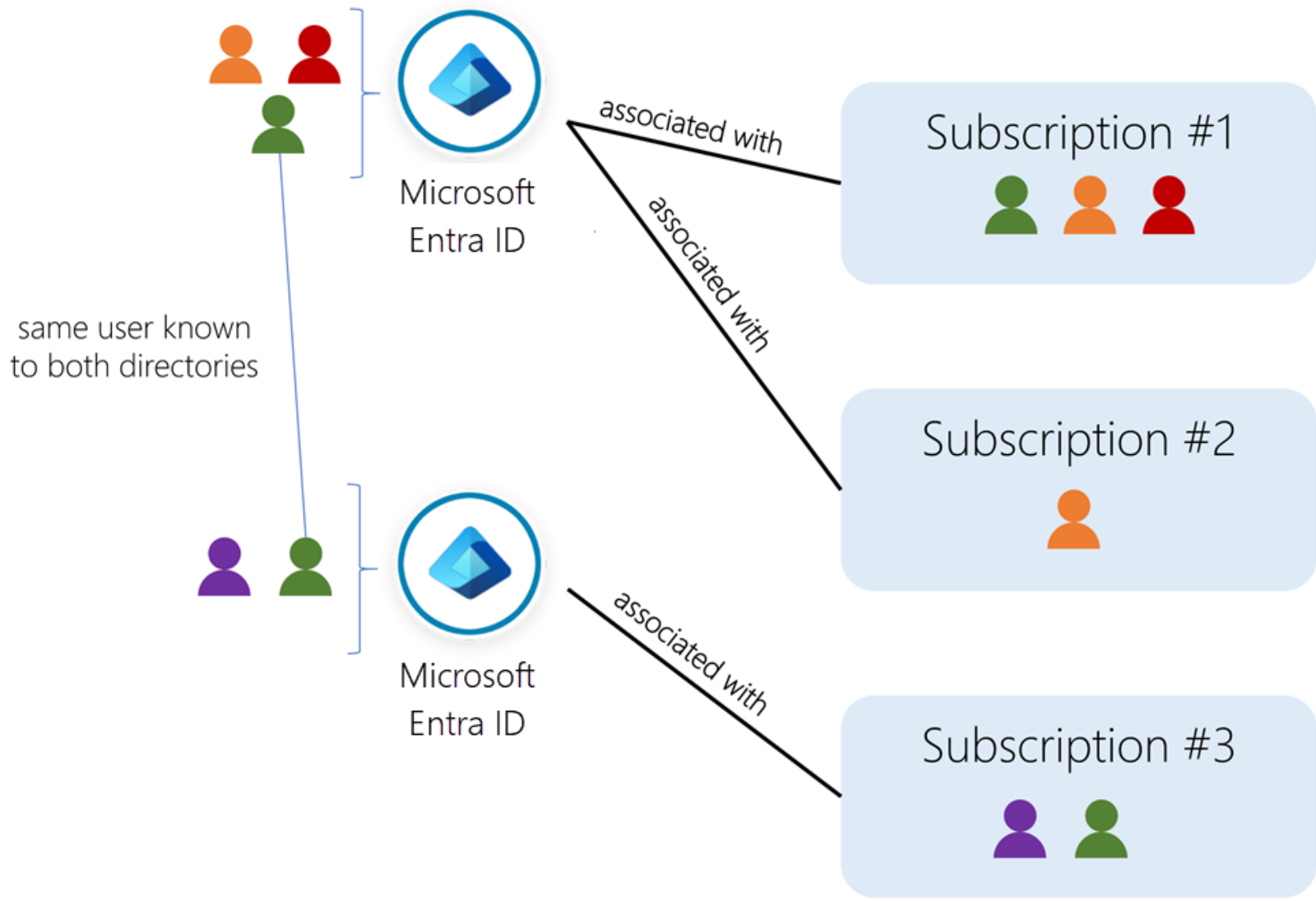
Cloud



```
1 New-MgGroup -Description "Marketing" -DisplayName "Marketing" -MailNickName "Marketing" -SecurityEnabled -MailEnabled:$False
```


Access rights	Description
Assigned	Add specific users as members of a group, where each user can have unique permissions.
Dynamic user	Use dynamic membership rules to automatically add and remove group members. When member attributes change, Azure reviews the dynamic group rules for the directory. If the member attributes meet the rule requirements, the member is added to the group. If the member attributes no longer meet the rule requirements, the member is removed.
Dynamic device	(Security groups only) Apply dynamic group rules to automatically add and remove devices in security groups. When device attributes change, Azure reviews the dynamic group rules for the directory. If the device attributes meet the rule requirements, the device is added to the security group. If the device attributes no longer meet the rule requirements, the device is removed.







Portal settings | Directories + subscriptions

Directories + subscriptions

Appearance + startup views

Language + region

My information

Signing out + notifications

All services and resources across the Azure portal will inherit the selection from basic filtering. Your selection will also be saved and reloaded the next time you sign in or reload the Azure portal.

Default subscription filter ⓘ

No subscriptions in Microsoft Learn Sandbox directory - Switch to another directory.

Advanced filters ⓘ



Directories ⓘ

Switching directories will reload the portal. The directory you choose will impact the subscription, resource group, and region filters that are available in the portal. [Learn more about directories.](#)

Current directory ⓘ : Microsoft Learn Sandbox

Startup directory ⓘ : Last visited ([change](#))Favorites All Directories

Directory name ↑↓

Domain ↑↓

Directory ID ↑↓

★ Microsoft Learn Sandbox

✔ Current

learn.docs.microsoft.com

★ Contoso Marketing Company

contosomarketing.onmicrosoft.com

Useful links

[Learn more about settings](#)

[Home](#) > [Create a resource](#) >

Create a tenant

Azure Active Directory



* Basics * Configuration Review + create

Directory details

Configure your new directory

Organization name * ⓘ

IdentityOrg



Initial domain name * ⓘ

IdentityOrgff



IdentityOrgff.onmicrosoft.com

Country/Region ⓘ

United States



✔ Datacenter location - United States

Datacenter location is based on the country/region selected above.

- Overview
- Preview features
- Diagnose and solve problems
- Manage
 - Users
 - Groups
 - External Identities
 - Roles and administrators
 - Administrative units
 - Delegated admin partners
 - Enterprise applications
 - Devices
 - App registrations
 - Identity Governance
 - Application proxy
 - Custom security attributes
 - Licenses
 - Cross-tenant synchronization
 - Microsoft Entra Connect
 - Custom domain names

- + Add
- Manage tenants
- What's new
- Preview features
- Got feedback?

📘 Azure Active Directory is now Microsoft Entra ID. [Learn more](#)

- Overview
- Monitoring
- Properties
- Recommendations
- Tutorials

🔍 Search your tenant

Basic information

Name	Contoso	Users	2
Tenant ID		Groups	1
Primary domain		Applications	0
License	Microsoft Entra ID Free	Devices	0

Alerts

⚠️ Microsoft Entra Connect v1 Retirement
All version 1.x builds of Microsoft Entra Connect (formerly AAD Connect) will soon stop working between October 2023 – March 2024. You must move to Cloud Sync or Microsoft Entra Connect v2.x.
[Learn more](#)

📘 Azure AD is now Microsoft Entra ID
Microsoft Entra ID is the new name for Azure Active Directory. No action is required from you.
[Learn more](#)

⚠️ Upcoming MFA Server deprecation

⚠️ Migrate to the converged Authentication methods policy

Демо!